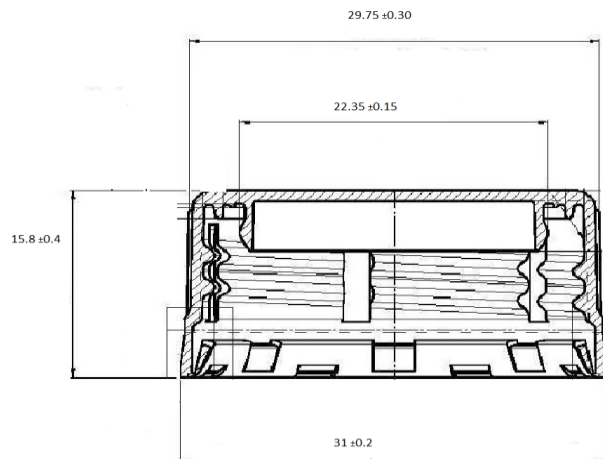




# TECHNICAL DATA SHEET

## 28mm PCO 1881 CAP (HOT FILLED)



### TECHNICAL INFORMATION

MATERIAL	HDPE
NECK SIZE	28 mm PCO 1881
WEIGHT	2.25(±0.10) gms
NO OF KNURLS	120 Knurls
TEMPER EVIDENT BAND	Folded & Slitted TE Band
TOP LOAD REQUIREMENT IN FILLING LINE	17-21 Kgs
APPLICATION TORQUE REQUIREMENT	16-17 lbs
OPENING TORQUE	9-14 lbs
SECURE SEAL TEST(SST)	1. 100 PSI No Leakage (60sec) 2. 150 PSI No Release(60sec)
CLOSURE O/D (WITHOUT RING)	29.80(±0.35) mm
CLOSURE O/D (WITH RING)	31.00(±0.40) mm
TOTAL HEIGHT	15.80(±0.40) mm
THREAD I/D	25.90(±0.60) mm
PLUG O/D	22.35(±0.15) mm
BRIDGE BREAKING STRENGTH	90(±15) N
USE	Mineral Water, Edible Oil, Juice

### PACKING DETAILS

NO OF PCS IN A BOX	7000pcs	
QUANTITY IN A 20ft CONTAINER	1,785,000 pcs	255Boxes
QUANTITY IN A 40ft CONTAINER	4,200,000 pcs	600Boxes